



# CAPABILITY STATEMENT



## COMPANY OVERVIEW:

Sustain Resource Management Pty Ltd (SRM) is an industry leaders to provide a comprehensive range of services for both commercial and civil applications across Australia.

By leveraging the strengths of its strong partnership, SRM is uniquely positioned to deliver high-quality, integrated solutions that meet diverse client needs with a strong focus on sustainability and innovation.

## CORE COMPETENCIES:

### Civil and Commercial Construction Services:

SRM provides a full spectrum of civil and commercial construction services. Drawing from the combined expertise of Directors and Management, SRM specialises in site preparation, earthworks, structural construction, and infrastructure development. Our team ensures that all projects are executed with precision, adhering to the highest standards of quality, safety, and environmental sustainability.

### Plant & Equipment Hire for Civil and Commercial Applications:

SRM offers a wide range of plant and equipment for mining, civil and commercial construction projects. These include excavators, rollers, graders, moxys, loaders, day makers plus more. By offering these services both in-house and through our partner network, SRM ensures consistent quality and seamless integration with other project components, reducing the need for multiple contractors and enhancing project efficiency.

### Telecommunication Infrastructure Installation:

Utilising the expertise of directors and management, SRM provides specialised services in telecommunications infrastructure, including horizontal directional drilling (HDD) and trenching both conduit and fibre optic cable installation. Our advanced technologies and methodologies allow us to install critical infrastructure with minimal disruption, ensuring high performance and reliability.



## ADDITIONAL SERVICE OFFERINGS:

To cater to a broad range of client needs, SRM offers the following additional services:

- **Dry Hire of Plant and Equipment:** Flexible rental options for heavy machinery and specialised equipment, providing clients with the tools needed for various construction, civil and mining projects.
- **Labour Hire:** We have the ability to provide suitably skilled labour across all sectors and industries. Our extensive pool of recruits ensure that we supply appropriate staff in a timely manner.
- **Trenching:** Our trenching and reinstatement services are essential for the safe and efficient installation of telecommunication infrastructure. We provide expert solutions to excavate, install, and restore ground surfaces with minimal disruption and maximum compliance.
- **Commercial Cleaning:** High-standard cleaning services for office spaces, retail locations, and industrial facilities, ensuring a pristine environment.
- **Facilities Management:** Integrated facilities management services to maintain and optimise building performance, enhancing operational efficiency.
- **Heavy Haulage:** Professional heavy haulage services to transport palletised loads and heavy machinery safely and efficiently.
- **Commercial Lawn and Garden Maintenance:** Expert landscaping services to maintain and enhance the aesthetic appeal and functionality of commercial properties.
- **Licensed Trades:** Services including electrical, plumbing, structural, brick laying and painting are just a few of the many trades that we offer.





## **CLEANING DIVISION:**

- Commercial Carpet and seat cleaning
- Machine floor scrubbing for tile and vinyl type flooring
- Pressure cleaning
- Builders final clean
- Periodical cleaning including high cleans
- General Cleaning

## **STRATEGIC PARTNERSHIPS AND IN-HOUSE CAPABILITIES:**

SRM combines in-house capabilities with strategic partnerships to deliver comprehensive solutions tailored to each client's specific requirements.

By maintaining control over most services and selectively partnering with industry leaders, SRM ensures consistent quality, streamlined project management, and the ability to scale operations according to project needs.

## **COMMITMENT TO QUALITY AND SUSTAINABILITY:**

Quality and sustainability are at the heart of SRM's operations. We implement stringent quality control processes across all projects, ensuring that every aspect meets or exceeds industry standards.

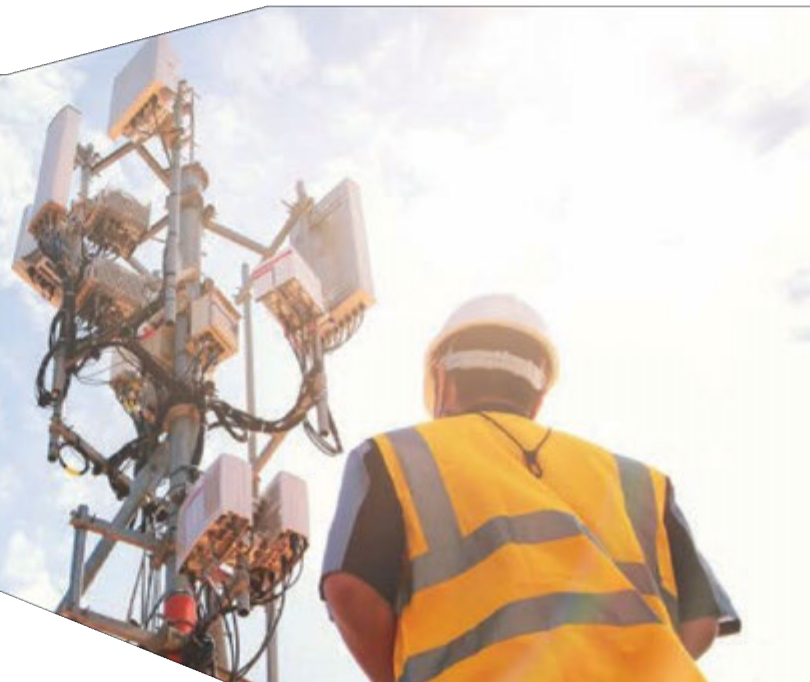
Our commitment to sustainability is reflected in our environmentally friendly practices, from using sustainable materials to minimising waste and optimising energy efficiency. We aim to deliver projects that not only meet client expectations but also contribute positively to the environment and communities.

## WHY CHOOSE SUSTAIN RESOURCE MANAGEMENT PTY LTD?:

- **Comprehensive Expertise:** The combined knowledge and experience of directors and management offer unmatched expertise across multiple sectors.
- **Integrated Solutions:** By providing a wide range of services under one roof, SRM ensures seamless project execution, reducing costs and improving project time lines.
- **Innovation and Technology:** Our commitment to utilising the latest technologies and innovative practices ensures efficient and effective project delivery.
- **Sustainability Focus:** SRM prioritises sustainable practices in all aspects of its operations, promoting long-term environmental and social benefits.
- **Client-Centric Approach:** We are dedicated to understanding and fulfilling the unique needs of each client, ensuring satisfaction and project success.

## CONTACT US:

To discover how Sustain Resource Management Pty Ltd can support your next project with comprehensive and innovative solutions, please visit our website or reach out to our team directly. We are ready to collaborate with you to achieve outstanding project outcomes.



## CONTACT INFORMATION:

- 📍 Sustain Resource Management
- ☎ 0438 650 599
- ✉ [admin@sustainrm.com.au](mailto:admin@sustainrm.com.au)
- 🌐 [sustainresourcemangement.com.au](http://sustainresourcemangement.com.au)